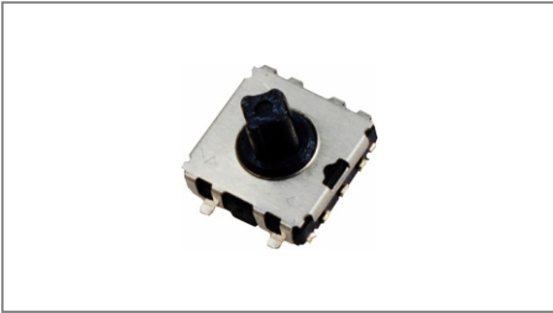


Multi directional switches

INT-1610UE Series 6.2×6.2mm, 5 Directions, Surface mount type with Guide bosses



- **Features** : One touch, multi way switching, distinctive tactile feel for scanning and select functions
- **Applications** : Electronic devices requiring direction control on LCD display, Remote Controllers, CCTV cameras, Digital cameras

► **Specifications** :

Rating	DC 12V 50mA
Contact resistance	500mΩ Max.
Travel (mm)	4 direction : 0.25 Center : 0.15

► **Part list**

Part No.	Length (mm)	Operating force		Life	QTY per pack (Tape & reel)
		4 Direction	Center		
INT-1610UE45B	4.5	160±50gf	260±70gf	100,000 Cycles Min.	1K
INT-1610UE50B	5.0	130±50gf	250±50gf		

► **Drawing**

The drawing includes three main views: a top view with dimensions (6.2±0.1, 6.2±0.1, 6.4±0.1, 7.2±0.2, 1.45, 6-0.5, 0.55, 3.50, 1.45, 2, 3, 4, 1, 2, 3, 4, 45°), a side view with dimensions (2.2, 0.66, 3.50, 6.50±0.3, 0.96, 1.85, 2.4, 1±0.2), and a PCB dimension view with dimensions (5.60, 3.50, 5.60, 7.80, 2.50, 4.50, 3.70, 2.10, 0.85, 0.85 HOLE, 1.15 HOLE, 6-0.50, 0.60, 1.45, 1.45).

Circuit diagram

The circuit diagram shows a central common terminal (B) connected to four directional terminals (A, C, D, E) and a center terminal (F). The connections are: COMMON (B) to A, B, C, D, E, and F.

PCB Dimension

The PCB dimension drawing shows the layout of the switch on a PCB, with dimensions for the component footprint and mounting holes.

TACT Switches
PUSH Switches
HOOK Switches
DETECTOR Switches
SLIDE Switches
ROTARY Potentiometers
LEVER Switches
ROTARY Switches
CAPS