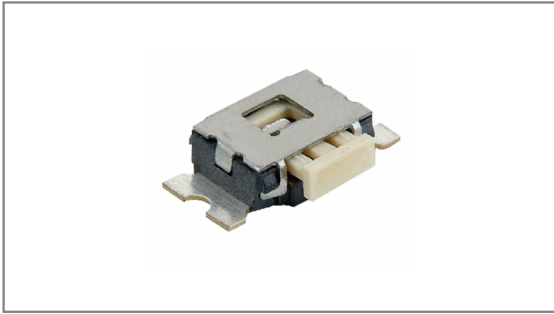


Side Tact switches

INT-1445F Series 1.7mm Height, Dustproof, Surface mount type



- **Features** : Sealed contact ensures dust resistance.
- **Applications** : Smartphones, Other mobile devices, Consumer electronics
- **Specifications** :

Rating	DC 12V 50mA
Contact resistance	100mΩ Max.
Travel (mm)	0.3±0.1

► Part list

Part No.	Knob size (mm)	Length (mm)	Operating force	Life	QTY per pack (Tape & reel)
INT-1445F44A	2.6×1.1	4.4	220±70gf	100,000 Cycles Min.	3K
INT-1445F4418A	2.6×1.8				

► Drawing

Part No.	Dimensions (mm)	Circuit Diagram	PCB Dimension (mm)
INT-1445F44A		<p>Circuit diagram</p>	<p>PCB Dimension</p>
INT-1445F4418A		<p>Circuit diagram</p>	<p>PCB Dimension</p>

TACT Switches

PUSH Switches

HOOK Switches

DETECTOR Switches

SLIDE Switches

ROTARY Potentiometers

LEVER Switches

ROTARY Switches

CAPS