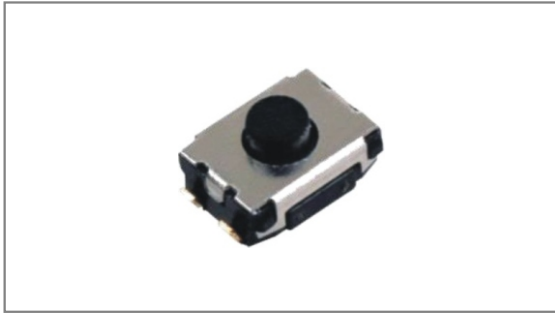


Subminiature Tact switches

INT-1430U Series 4.7×3.5mm with 2.5mm length, Dustproof, Surface mount type



- ▶ **Features :** Subminiature design
& Rubber stem provides soft feeling
- ▶ **Applications :** Smartphones, Other mobile devices,
Consumer electronics
- ▶ **Specifications :**

Rating	DC 12V 50mA
Contact resistance	100mΩ Max.
Travel (mm)	0.2±0.1

▶ Part list

Part No.	Length (mm)	Operating force	Life	QTY per pack (Tape & reel)
INT-1430U25A	2.5	160±50gf	100,000 Cycles Min.	3K
INT-1430U25B		250±50gf		

▶ Drawing



TACT Switches
PUSH Switches
HOOK Switches
DETECTOR Switches
SLIDE Switches
ROTARY Potentiometers
LEVER Switches
ROTARY Switches
CAPS