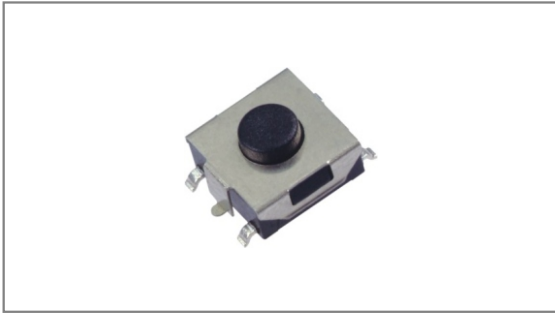


# SMT Tact switches

**INT-1157SG Series** 6.2×6.5mm with 2.0mm case height, Surface mount type with Ground pin



- **Features** : Suitable for variety of controls
- **Applications** : Audio, TV, Communication devices, Operating switches for all kinds of electronic equipments
- **Specifications** :

Rating	DC 12V 50mA
Contact resistance	100mΩ Max.
Travel (mm)	0.25±0.1

## ► Part list

Part No.	Length (mm)	Operating force	Pitch (mm)	Life	QTY per pack (Tape & reel)
INT-1157SG25AO	2.5	160±50gf	8.00	100,000 Cycles Min.	1.5K (1.7K)
INT-1157SG31AO	3.1				
INT-1157SG37AO	3.7				
INT-1157SG25BO	2.5	250±50gf			
INT-1157SG31BO	3.1				
INT-1157SG37BO	3.7				
INT-1157SG25AP	2.5	160±50gf	9.00		
INT-1157SG31AP	3.1				
INT-1157SG37AP	3.7				
INT-1157SG25BP	2.5	250±50gf			
INT-1157SG31BP	3.1				
INT-1157SG37BP	3.7				

\* Long life (1KK cycles) is available and part numbers in long life change to INT-1157SG25AOL / INT-1157SG25APL~ INT-1157SG37AOL / INT-1157SG37APL.

## ► Drawing

