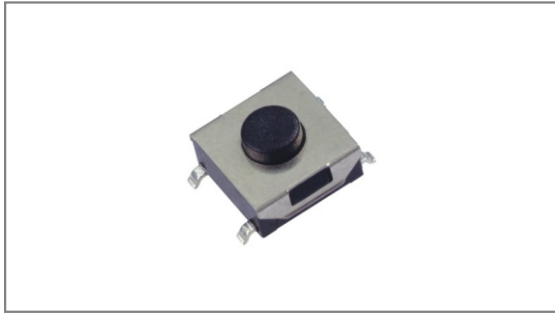


# SMT Tact switches

**INT-1157S Series** 6.2×6.5mm with 2.0mm case height, Surface mount type



- ▶ **Features** : Suitable for variety of controls
- ▶ **Applications** : Audio, TV, Communication devices, Operating switches for all kinds of electronic equipments
- ▶ **Specifications** :

Rating	DC 12V 50mA
Contact resistance	100mΩ Max.
Travel (mm)	0.25±0.1

## ▶ Part list

Part No.	Length (mm)	Operating force	Pitch (mm)	Life	QTY per pack (Tape & reel)
INT-1157S25AO	2.5	160±50gf	8.0	100,000 Cycles Min.	1.5K (1.7K)
INT-1157S31AO	3.1				
INT-1157S37AO	3.7				
INT-1157S25BO	2.5	250±50gf			
INT-1157S31BO	3.1				
INT-1157S37BO	3.7				
INT-1157S25AP	2.5	160±50gf	9.0		
INT-1157S31AP	3.1				
INT-1157S37AP	3.7				
INT-1157S25BP	2.5	250±50gf			
INT-1157S31BP	3.1				
INT-1157S37BP	3.7				

\* Long life (1KK cycles) is available and part numbers in long life change to INT-1157S25AOL / INT-1157S25APL~ INT-1157S37AOL / INT-1157S37APL.

## ▶ Drawing

Top view dimensions: 4.5, 4±0.7, 6.5±0.1, 6.2±0.1, 4, 6.2±0.1

Side view dimensions: Ø3.0, 2.0, L±0.2, P±0.2, t±0.3

End view dimension: 4.5

**Circuit diagram**

**PCB Dimension**

TACT Switches  
 PUSH Switches  
 HOOK Switches  
 DETECTOR Switches  
 SLIDE Switches  
 ROTARY Potentiometers  
 LEVER Switches  
 ROTARY Switches  
 CAPS