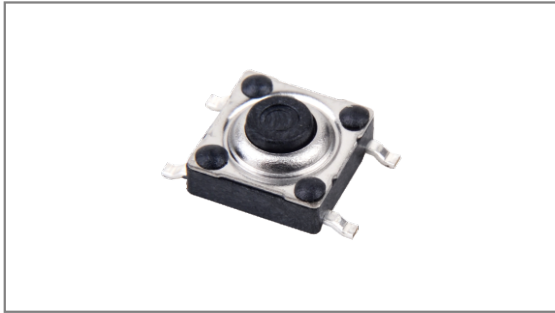


# Waterproof switches

**INT-1134S Series** 6.2×6.2mm,  $\varnothing$ 2.9mm Stem, Metal cover, Surface mount type, Terminal spacing of 4.5mm



- **Features** : IP67 dust & water resistance
- **Applications** : Home appliances or Industrial equipments used around water
- **Specifications** :

Rating	DC 12V 50mA
Contact resistance	100m $\Omega$ Max.
Travel (mm)	0.3 $\pm$ 0.1

## ► Part list

Part No.		Length (mm)	Operating force	Pitch (mm)		Life	QTY per pack (Tape & reel)			
				O	P					
INT-1134S31AO	INT-1134S31AP	3.1	200 $\pm$ 50gf	8.2	9.0	350,000 Cycles Min.	1.6K			
INT-1134S35AO	INT-1134S35AP	3.5								
INT-1134S43AO	INT-1134S43AP	4.3								
INT-1134S50AO	INT-1134S50AP	5.0								
INT-1134S95AO	INT-1134S95AP	9.5								
INT-1134S11AO	INT-1134S11AP	11.0								
INT-1134S31BO	INT-1134S31BP	3.1	300 $\pm$ 70gf				8.2	9.0	350,000 Cycles Min.	1.6K
INT-1134S35BO	INT-1134S35BP	3.5								
INT-1134S43BO	INT-1134S43BP	4.3								
INT-1134S50BO	INT-1134S50BP	5.0								
INT-1134S95BO	INT-1134S95BP	9.5								
INT-1134S11BO	INT-1134S11BP	11.0								
INT-1134S31CO	INT-1134S31CP	3.1	100 $\pm$ 30gf	8.2	9.0	350,000 Cycles Min.				1.6K
INT-1134S35CO	INT-1134S35CP	3.5								
INT-1134S43CO	INT-1134S43CP	4.3								
INT-1134S50CO	INT-1134S50CP	5.0								
INT-1134S95CO	INT-1134S95CP	9.5								
INT-1134S11CO	INT-1134S11CP	11.0								

## ► Drawing

Terminal spacing of 4.5mm

Top view dimensions: 6.2 $\pm$ 0.1 (width), 6.2 $\pm$ 0.1 (height), 4-0.7 (terminal offset), 4.5 (terminal spacing).

Side view dimensions: 0.5 MAX (height),  $\varnothing$ 2.9 $\pm$ 0.2 (stem diameter), 2.0 (base width), 2.55 (base height), L $\pm$ 0.2 (lead length), P $\pm$ 0.2 (pitch).

Front view dimension: 4.5 (terminal spacing).

**Circuit diagram**: Shows a switch with four terminals labeled 1, 2, 3, and 4.

**PCB Dimension**: Shows the footprint with dimensions 6.50 (width), 10.60 (length), 3.10 (lead length), and 5.90 (total length).