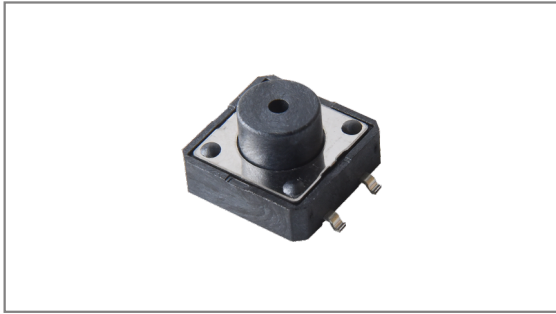


Waterproof switches

INT-1133S Series 12×12mm, Metal cover, Surface mount type



- ▶ **Features** : IP67 dust & water resistance
- ▶ **Applications** : Home appliances or Industrial equipments used around water
- ▶ **Specifications** :

Rating	DC 12V 50mA
Contact resistance	100mΩ Max.
Travel (mm)	0.3±0.15

▶ Part list

Part No.	Length (mm)	Operating force	Life	QTY per pack (Tape & reel)
INT-1133S43A	4.3	200 ± 50gf	100,000 Cycles Min.	-
INT-1133S45A	4.5			850
INT-1133S50A	5.0			500
INT-1133S75A	7.5			400
INT-1133S85A	8.5			250
INT-1133S95A	9.5			200
INT-1133S12A	12.0			
INT-1133S15A	15.0			

▶ Drawing

The drawing includes the following views and dimensions:

- Top View:** Shows a square metal cover with a diameter of 12.0 ± 0.1 mm. The central opening has a diameter of $\phi 6.70 \pm 0.1$ mm. The mounting holes are spaced 4 ± 1.0 mm from the center. The thickness of the cover is 12.0 ± 0.1 mm.
- Side View:** Shows the profile of the switch with a total height of 15.0 ± 0.2 mm. The top flange has a diameter of $\phi 6.7$ mm. The mounting tabs are 7.5 ± 0.2 mm high and 3.9 mm wide. The maximum height of the top flange is 0.5 mm.
- Bottom View:** Shows the PCB mounting pads with a diameter of 5 ± 0.2 mm and a spacing of 1.0 mm between them. The total length of the PCB pads is $L \pm 0.2$ mm.
- Circuit Diagram:** A schematic showing a single switch with four terminals labeled 1, 2, 3, and 4.
- PCB Dimension:** Shows the PCB footprint with a total width of 17.0 mm and a total length of 11.0 mm. The mounting pads are 6.6 mm wide and 3.4 mm high.

- TACT Switches
- PUSH Switches
- HOOK Switches
- DETECTOR Switches
- SLIDE Switches
- ROTARY Potentiometers
- LEVER Switches
- ROTARY Switches
- CAPS