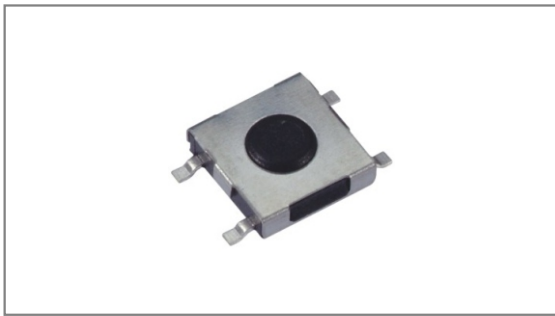


# Subminiature Tact switches

**INT-1127S Series** 4.5×4.5mm, Surface mount type



- **Features** : Subminiature design, Suitable for variety of controls
- **Applications** : Operating switches for all kinds of electronic equipments
- **Specifications** :

Rating	DC 12V 50mA
Contact resistance	100mΩ Max.
Travel (mm)	0.2±0.1

## ► Part list

Part No.	Length (mm)	Operating force	Pitch (mm)		Life	QTY per pack (Tape & reel)	Remarks
			P	Q			
INT-1127S15AP	INT-1127S15AQ	1.5	3.0	3.5	100,000 Cycles Min.	4K	without guide bosses
INT-1127S27AP	INT-1127S27AQ	2.7				3K	
INT-1127S43AP	INT-1127S43AQ	4.3				2K	
INT-1127S15BP	INT-1127S15BQ	1.5	3.0	3.5		4K	with guide bosses
INT-1127S27BP	INT-1127S27BQ	2.7				3K	
INT-1127S43BP	INT-1127S43BQ	4.3				2K	
INT-1127SE15AP	INT-1127SE15AQ	1.5	3.0	3.5	3,400	with guide bosses	
INT-1127SE27AP	INT-1127SE27AQ	2.7			2,400		
INT-1127SE43AP	INT-1127SE43AQ	4.3			1,500		
INT-1127SE15BP	INT-1127SE15BQ	1.5	3.0	3.5	3,400	with guide bosses	
INT-1127SE27BP	INT-1127SE27BQ	2.7			2,400		
INT-1127SE43BP	INT-1127SE43BQ	4.3			1,500		

## ► Drawing

Without guide bosses	With guide bosses
	<p><b>Circuit diagram</b></p>
	<p><b>Circuit diagram</b></p>
	<p><b>PCB Dimension</b></p>

TACT Switches  
 PUSH Switches  
 HOOK Switches  
 DETECTOR Switches  
 SLIDE Switches  
 ROTARY Potentiometers  
 LEVER Switches  
 ROTARY Switches  
 CAPS