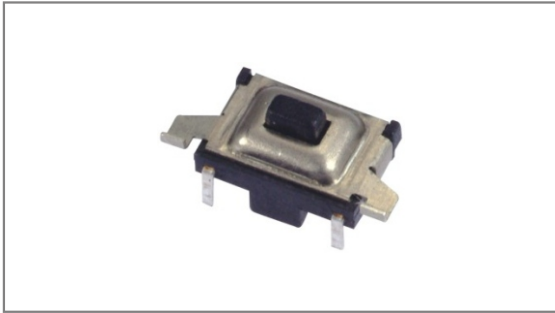


# Side Tact switches

**INT-1110VS Series** 3.5mm Height, Dustproof, Surface mount type



- **Features** : Sealed contact ensures dust resistance.
- **Applications** : Smartphones, Other mobile devices, Consumer electronics
- **Specifications** :

Rating	DC 12V 50mA
Contact resistance	100mΩ Max.
Travel (mm)	0.15±0.1

## ► Part list

Part No.	Length (mm)	Operating force	Life	QTY per pack (Tape & reel)
INT-1110VS33AL	3.3	160±50gf	100,000 Cycles Min.	2K
INT-1110VS375AL	3.75			
INT-1110VS33BL	3.3	250±50gf		
INT-1110VS375BL	3.75			

## ► Drawing

The drawing section contains three main technical views of the side tact switch:

- Top View:** Shows the overall footprint with dimensions: width  $5.2 \pm 0.1$  mm, total width  $7.2 \pm 0.2$  mm, and height  $3.5 \pm 0.1$  mm. Internal features are dimensioned with  $1.1$  mm and  $1.8$  mm.
- Side View:** Shows the profile of the switch with dimensions: total height  $L1 \pm 0.2$  mm, mounting pad thickness  $t:0.15$  mm, and a  $1.8$  mm wide feature.
- PCB Dimension:** Shows the layout of the switch on a PCB with dimensions: total width  $6.40$  mm, mounting pad width  $1.45$  mm, and a  $4.20$  mm wide feature.

Additionally, a **Circuit diagram** is provided, showing a switch with terminals A, B, C, and D. Terminal C is connected to ground, and terminal D is also connected to ground.