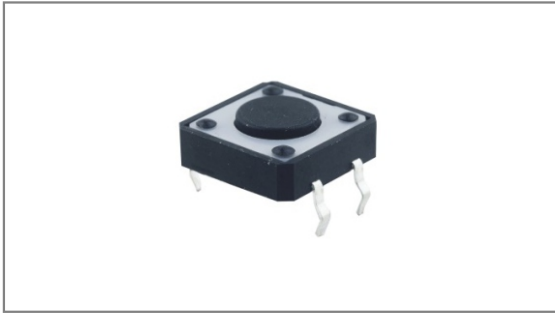


Tact switches 12×12

INT-1103BS Series 12×12mm with 3.5mm case height, Through hole type



- **Features** : Suitable for variety of controls
- **Applications** : Operating switches for all kinds of electronic equipments
- **Specifications** :

Rating	DC 12V 50mA
Contact resistance	100mΩ Max.
Travel (mm)	0.25+0.2/-0.1

► Part list

Part No.	Length (mm)	Operating force	Life	QTY per pack (Plastic bag)
INT-1103BS43C	4.3	160±50gf	100,000 Cycles Min.	1K

► Drawing

Technical drawings showing dimensions for the tactile switch:

- Top view: Overall width 12.0±0.1, hole diameter Ø6.70±0.1, mounting hole diameter 4.1±0.1, distance between mounting holes 5.0, distance from edge to mounting hole 12.0±0.1.
- Side view: Case height 3.50, lead height 4.3±0.2, lead diameter 0.5 MAX, mounting hole diameter Ø6.7±0.1, distance between mounting holes 12.50±0.2, distance from edge to mounting hole 14.1±0.3.
- Detail view: Lead diameter 1±0.2, distance between leads 5.0.

Circuit diagram

The circuit diagram shows a switch with four terminals: A and B on the left, and C and D on the right. The switch is shown in its open state.

PCB Dimension

The PCB dimension drawing shows a square footprint with four mounting holes. The hole diameter is 4-Ø1.35 HOLES. The distance between the centers of the holes is 12.50, and the distance from the edge to the center of a hole is 5.00.