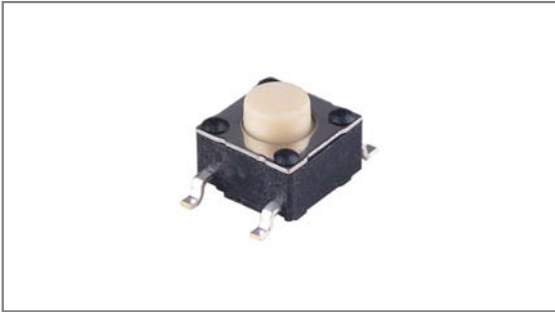


Dustproof switches

INT-1102SW Series 6.2×6.2mm, Metal cover, Surface mount type

- TACT Switches
- PUSH Switches
- HOOK Switches
- DETECTOR Switches
- SLIDE Switches
- ROTARY Potentiometers
- LEVER Switches
- ROTARY Switches
- CAPS



- ▶ **Features** : Covered by dust cover and suited for dusty environments
- ▶ **Applications** : Home appliances or Industrial equipments exposed to dust
- ▶ **Specifications** :

Rating	DC 12V 50mA
Contact resistance	100mΩ Max.
Travel (mm)	0.25±0.1

▶ **Part list**

Part No.		Length (mm)	Operating force	Pitch (mm)		Life	QTY per pack (Tape & reel)
				P	Q		
INT-1102SW43AP	INT-1102SW43AQ	4.3	160±50gf	9.0	10.0	100,000 Cycles Min.	1K
INT-1102SW50AP	INT-1102SW50AQ	5.0					
INT-1102SW60AP	INT-1102SW60AQ	6.0					
INT-1102SW70AP	INT-1102SW70AQ	7.0					
INT-1102SW73AP	INT-1102SW73AQ	7.3					
INT-1102SW75AP	INT-1102SW75AQ	7.5					
INT-1102SW80AP	INT-1102SW80AQ	8.0					
INT-1102SW85AP	INT-1102SW85AQ	8.5					
INT-1102SW95AP	INT-1102SW95AQ	9.5					
INT-1102SW12AP	INT-1102SW12AQ	12.0					
INT-1102SW125AP	INT-1102SW125AQ	12.5					
INT-1102SW13AP	INT-1102SW13AQ	13.0					
INT-1102SW43BP	INT-1102SW43BQ	4.3					250±50gf
INT-1102SW50BP	INT-1102SW50BQ	5.0					
INT-1102SW60BP	INT-1102SW60BQ	6.0					
INT-1102SW70BP	INT-1102SW70BQ	7.0					
INT-1102SW73BP	INT-1102SW73BQ	7.3					
INT-1102SW75BP	INT-1102SW75BQ	7.5					
INT-1102SW80BP	INT-1102SW80BQ	8.0					
INT-1102SW85BP	INT-1102SW85BQ	8.5					
INT-1102SW95BP	INT-1102SW95BQ	9.5					
INT-1102SW12BP	INT-1102SW12BQ	12.0					
INT-1102SW125BP	INT-1102SW125BQ	12.5					
INT-1102SW13BP	INT-1102SW13BQ	13.0					

▶ **Drawing**

